



 **Knightsbridge**

THE COMPLETE  
OUTDOOR RANGE





### WALL LIGHTS

Pages 1-19



### BOLLARDS & PEDESTALS

Pages 27-33



### LED FLEX

Page 52-54



### WEATHERPROOF ACCESSORIES

Pages 56-62



### SPIKE LIGHTS

Pages 20-26



### SENSORS

Pages 49-51



### GROUND LIGHTS

Pages 34-40



### FLOODLIGHTS

Pages 41-48

**Important:**  
Some of our outdoor lighting products may not be suitable for use in coastal areas where salt corrosion is prevalent.



WALL2LC

230V 50Hz
IP65
☑️
LAMP NOT INCLUDED
1 YEAR WARRANTY
⚡️

### WALL1L WALL LIGHT

**Construction:** 304 Stainless Steel (WALL1LBK: Die-cast Aluminium)  
**Lamp type:** GU10 LED



Code	Finish	Height	Diameter	Base Ø	Projection
WALL1L	Stainless Steel	120mm	60mm	78mm	86mm
WALL1LBK	Black	112mm	64mm	78mm	94mm
WALL1LC	Copper Effect	120mm	60mm	78mm	86mm

### WALL2L UP / DOWN WALL LIGHT

**Construction:** 304 Stainless Steel (WALL2LBK: Die-cast Aluminium)  
**Lamp type:** GU10 LED



Code	Finish	Height	Diameter	Base Ø	Projection
WALL2L	Stainless Steel	162mm	60mm	78mm	86mm
WALL2LBK	Black	166mm	64mm	78mm	94mm
WALL2LC	Copper Effect	162mm	60mm	78mm	86mm

### WALL3L WALL LIGHT

**Construction:** 304 Stainless Steel (WALL3LBK: Die-cast Aluminium)  
**Lamp type:** GU10 LED



Code	Finish	Height	Diameter	Base Ø	Projection
WALL3L	Stainless Steel	140mm	60mm	78mm	155mm
WALL3LBK	Black	145mm	64mm	78mm	166mm
WALL3LC	Copper Effect	140mm	60mm	78mm	155mm

**Knightsbridge**

## OUTDOOR WALL LIGHTS



WALL4LSS

EA1A



### WALL4L UP/DOWN WALL LIGHT WITH PIR SENSOR

- Sensor detection range 8m when mounted at 2.4m
- PIR field of detection: 110°
- Includes manual override

**Construction:** 304 Stainless Steel  
**Lamp type:** GU10 LED



Code	Finish	Height	Diameter	Base Width	Base Height	Base Depth	Projection
WALL4LSS	Stainless Steel	222mm	60mm	60mm	184mm	30mm	112mm



### WALL5L WALL LIGHT WITH PIR SENSOR

- Sensor detection range 8m when mounted at 2.4m
- PIR field of detection: 110°
- Includes manual override

**Construction:** 304 Stainless Steel  
**Lamp type:** GU10 LED



Code	Finish	Height	Diameter	Base Width	Base Height	Base Depth	Projection
WALL5LSS	Stainless Steel	184mm	60mm	60mm	184mm	30mm	112mm

### EAMON GU10 SINGLE WALL LIGHT

- Corrosion resistant
- Weather resistant
- Compact design
- Dimmable subject to lamp

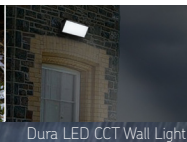
**Construction:** Polycarbonate  
**Lamp type:** GU10 LED (max. 5W)



MADE FROM POLYCARBONATE

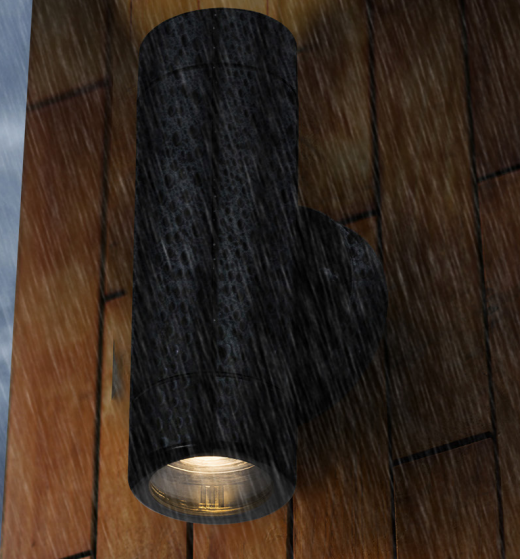
Code	Finish	Height	Diameter	Projection	Base
EA1A	Anthracite	125mm	60mm	88mm	80mm
EA1BB	Brushed Brass	125mm	60mm	88mm	80mm
EA1BK	Black	125mm	60mm	88mm	80mm
EA1W	White	125mm	60mm	88mm	80mm

**THE POLYCARBONATE  
 OUTDOOR LIGHTING  
 COLLECTION**  
 ROBUST, CORROSION-RESISTANT,  
 AND LOW-MAINTENANCE





EA2A



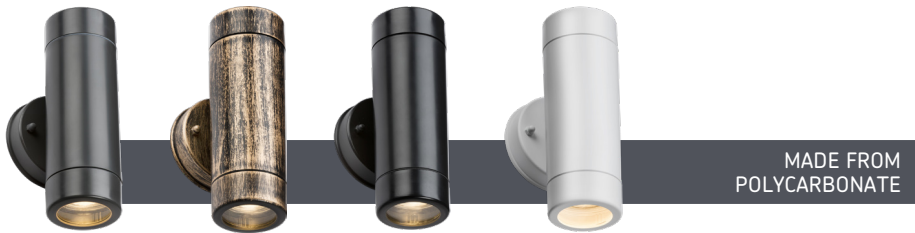
ALC2BK



### EAMON GU10 UP / DOWN WALL LIGHT

- Corrosion resistant
- Weather resistant
- Compact design
- Dimmable subject to lamp

**Construction:** Polycarbonate  
**Lamp type:** GU10 LED (max. 5W)



MADE FROM POLYCARBONATE

Code	Finish	Height	Diameter	Projection	Base
EA2A	Anthracite	170mm	60mm	88mm	80mm
EA2BB	Brushed Brass	170mm	60mm	88mm	80mm
EA2BK	Black	170mm	60mm	88mm	80mm
EA2W	White	170mm	60mm	88mm	80mm



### ALANA GU10 CURVED WALL LIGHTS

- Corrosion resistant
- Weather resistant
- Compact design
- Dimmable subject to lamp

**Construction:** Polycarbonate & glass  
**Lamp type:** GU10 LED (max. 5W)

MADE FROM POLYCARBONATE



Code	Finish	Height	Width	Projection
ALC1BK	Matt Black	92mm	68mm	80mm
ALC2BK	Matt Black	150mm	68mm	92mm

### ALANA GU10 SQUARE WALL LIGHTS

- Corrosion resistant
- Weather resistant
- Compact design
- Dimmable subject to lamp

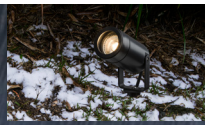
**Construction:** Polycarbonate & glass  
**Lamp type:** GU10 LED (max. 5W)

MADE FROM POLYCARBONATE

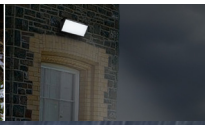


Code	Finish	Height	Width	Projection
ALS1BK	Matt Black	92mm	68mm	80mm
ALS2BK	Matt Black	150mm	68mm	92mm

**THE POLYCARBONATE  
 OUTDOOR LIGHTING  
 COLLECTION**  
 ROBUST, CORROSION-RESISTANT,  
 AND LOW-MAINTENANCE



Eamon Spike Lights



Dura LED CCT Wall Light



Dura LED CCT Bollard



EAPIR2BK

LWALL1A



### EAMON GU10 WALL LIGHT WITH PIR SENSOR

- Corrosion resistant
- Weather resistant
- Compact design
- PIR sensor with adjustable detection range, hold time and lux

**Construction:** Polycarbonate  
**Lamp type:** GU10 LED (max. 5W)  
**Sensor detection:** 110°  
**Sensor duration:** 10 sec - 5 min



MADE FROM POLYCARBONATE

Code	Finish	Height	Diameter	Projection	Base Height	Base Width
EAPIR1BK	Black	160mm	60mm	100mm	160mm	74mm
EAPIR2BK	Black	160mm	60mm	100mm	160mm	74mm



### MINI ALUMINIUM LED WALL LIGHTS

- Contemporary lightweight design, constructed with an aluminium body, suitable for indoor and outdoor use
- Compact sized outdoor lights with integral LED
- Energy efficient, low-maintenance and long life

**Construction:** Aluminium  
**Driver:** Integral  
**Lamp type:** CoB LED

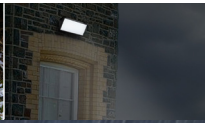


Code	Wattage	Finish	Colour	CCT	Dimensions(mm)	Base	Lumens
LWALL1A	4W	Brushed Chrome	Warm White	3000K	H: 81 Ø: 49 P: 80	Ø: 62mm	175lm
LWALL2A	2 x 4W	Brushed Chrome	Warm White	3000K	H: 135 Ø: 49 P: 80	Ø: 62mm	435lm
LWALL3A	4W	Brushed Chrome	Warm White	3000K	Ø: 49 P: 139	Ø: 62mm	175lm

**THE POLYCARBONATE  
 OUTDOOR LIGHTING  
 COLLECTION**  
 ROBUST, CORROSION-RESISTANT,  
 AND LOW-MAINTENANCE



Eamon Spike Lights



Dura LED CCT Wall Light



Dura LED CCT Bollard



WALL2

OWALL1BK



### HEAVY GAUGE WALL LIGHTS

**Construction:** 304 Stainless Steel  
**Lamp type:** GU10 LED

Code	Finish	Height	Diameter	Base Ø	Projection
WALL1	Stainless Steel	108mm	62mm	76mm	92mm



Code	Finish	Height	Diameter	Base Ø	Projection
WALL2	Stainless Steel	160mm	62mm	76mm	92mm



Code	Finish	Height	Diameter	Base Ø	Projection
WALL3	Stainless Steel	140mm	62mm	76mm	162mm



### OWALL FIXED SINGLE WALL LIGHTS

**Construction:** 201 Stainless Steel  
**Lamp type:** GU10 LED



Code	Finish	Height	Diameter	Projection	Base Width	Base Height
OWALL01A	Anthracite	120mm	60mm	96mm	81mm	71mm
OWALL1BC	Brushed Chrome	120mm	60mm	96mm	81mm	71mm
OWALL1BK	Black	120mm	60mm	96mm	81mm	71mm
OWALL1W	White	120mm	60mm	96mm	81mm	71mm

### OWALL UP/DOWN WALL LIGHTS

**Construction:** 201 Stainless Steel  
**Lamp type:** GU10 LED x 2



Code	Finish	Height	Diameter	Projection	Base Width	Base Height
OWALL02A	Anthracite	170mm	60mm	96mm	81mm	71mm
OWALL2BC	Brushed Chrome	170mm	60mm	96mm	81mm	71mm
OWALL02BK	Black	170mm	60mm	96mm	81mm	71mm
OWALL2W	White	170mm	60mm	96mm	81mm	71mm

### OWALL PHOTOCELL SENSOR MODELS

**Construction:** 201 Stainless Steel  
**Lamp type:** GU10 LED



Code	Finish	Height	Diameter	Projection	Code	Finish	Height	Diameter	Projection
OWALL1AP	Anthracite	120mm	60mm	96mm	OWALL2AP	Anthracite	170mm	60mm	96mm
OWALL1BCP	Brushed Chrome	120mm	60mm	96mm	OWALL2BCP	Brushed Chrome	170mm	60mm	96mm
OWALL1BKP	Black	120mm	60mm	96mm	OWALL2BKP	Black	170mm	60mm	96mm
OWALL1WP	White	120mm	60mm	96mm	OWALL2WP	White	170mm	60mm	96mm



WAD12AA



### ADJUSTABLE UP/DOWN WALL LIGHTS

- Adjustable beam angle, from 0° to 100°
- Independently adjustable lighting effect

**Construction:** Die-cast Aluminium  
**Driver:** Integral  
**Lamp type:** LED



Code	Wattage	Height	Width	Projection (mm)	Finish	Colour	CCT	Lumens
WAD12AA	2 x 6W	125	100	100	Anthracite	Warm White	3000K	2 x 300lm
WAD12ABK	2 x 6W	125	100	100	Matt Black	Warm White	3000K	2 x 300lm



TOROUP



### TORO LED CCT ADJUSTABLE COACH LANTERN

- Corrosion resistant
- Adjustable CCT (3000K / 4000K)
- Contemporary design

**Construction:** Polycarbonate  
**Driver:** Integral  
**Lamp type:** SMD LED



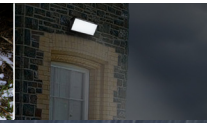
MADE FROM POLYCARBONATE

Code	Finish	CCT	Lumens	Height	Width	Projection
TOROUP	Black	3000K / 4000K	350lm / 375lm	220mm	164mm	190mm
TORODO	Black	3000K / 4000K	460lm / 490lm	220mm	164mm	190mm

**THE POLYCARBONATE  
 OUTDOOR LIGHTING  
 COLLECTION**  
 ROBUST, CORROSION-RESISTANT,  
 AND LOW-MAINTENANCE



Eamon Spike Lights



Dura LED CCT Wall Light



Dura LED CCT Bollard





LANT1



### EXTERIOR LED LANTERNS

- Durable, corrosion-resilient construction
- Low-maintenance, long-life and energy efficient
- Sensor detection angle 90° with manual override (PIR models)

**Construction:** Polycarbonate  
**Driver:** Integral  
**Lamp type:** LED



Code	Wattage	Height	Width	Base Ø	Projection (mm)	Mode	Finish	Colour	CCT	Lumens
LANT1	8W	375	177	97	230	Standard	Black	Cool White	4000K	555lm
LANT1W	8W	375	177	97	230	Standard	White	Cool White	4000K	555lm
LANT2	8W	375	177	97	230	With PIR	Black	Cool White	4000K	555lm
LANT2W	8W	375	177	97	230	With PIR	White	Cool White	4000K	555lm
LANT1BKP	8W	375	177	97	230	Photocell	Black	Cool White	4000K	555lm
LANT1WP	8W	375	177	97	230	Photocell	White	Cool White	4000K	555lm

### EXTERIOR LED HALF-LANTERNS

- Sensor detection angle 90° with manual override (PIR models)

**Construction:** Polycarbonate  
**Driver:** Integral  
**Lamp type:** LED



Code	Wattage	Height	Width	Projection (mm)	Mode	Finish	Colour	CCT	Lumens
LANT3	8W	362	175	99	Standard	Black	Cool White	4000K	440lm
LANT3W	8W	362	175	99	Standard	White	Cool White	4000K	440lm
LANT4	8W	362	175	99	With PIR	Black	Cool White	4000K	440lm
LANT4W	8W	362	175	99	With PIR	White	Cool White	4000K	440lm
LANT3BKP	8W	362	175	99	Photocell	Black	Cool White	4000K	440lm
LANT3WP	8W	362	175	99	Photocell	White	Cool White	4000K	440lm



NH027



### STAINLESS STEEL EXTERIOR WALL LIGHTS

**Construction:** 201 Stainless Steel  
**Driver:** Not Required  
**Lamp type:** E27 (40W max.)



NH027 NH028

Code	Mode	Height	Width (mm)	Finish	Projection(mm)
NH027	Window Fascia	276	205	Stainless Steel	90
NH027S	Window Fascia with PIR	276	205	Stainless Steel	96
NH028	Slotted Fascia	276	205	Stainless Steel	90
NH028S	Slotted Fascia with PIR	276	205	Stainless Steel	96



### STAINLESS STEEL LANTERN

- Stainless steel with clear glass
- Powder-coated finish
- LED compatible

**Construction:** 304 Stainless Steel  
**Driver:** Not Required  
**Lamp type:** E27 (40W max.)



Code	Finish	Height	Width	Base	Projection(mm)
LANTBK	Anthracite	200	120	H: 100 W:78	150
LANTSS	Brushed Chrome	200	120	H: 100 W:78	150



OL01W



### E27 OUTDOOR WALL LIGHT

**Construction:** Die-cast Aluminium  
**Driver:** Not Required  
**Lamp type:** E27 (20W max.)



Code	Finish	Height	Width	Projection (mm)
OL01W	Black	245	108	148

### GU10 WALL LIGHT

**Construction:** 304 Stainless Steel  
**Driver:** Not Required  
**Lamp type:** GU10 LED



Code	Finish	Diameter	Height	Projection (mm)
GDL1	Anthracite	102	195	144

### E27 OUTDOOR WALL LIGHT

**Construction:** Aluminium & glass  
**Driver:** Not Required  
**Lamp type:** E27 GLS (15W max.)



Code	Finish	Diameter	Height	Projection (mm)
OLG1W	Black	130	295	185

FOR MATCHING BOLLARD, SEE PAGES 32 -33



NH020W



### LED GUIDE / STAIR / WALL LIGHTS

**Construction:** Die-cast Aluminium  
**Driver:** Integral  
**Lamp type:** LED



NH016W



NH017W

Code	Wattage	Height	Width	Cut-out	Recessed Depth (mm)	Finish	Colour	CCT	Lumens
NH016W	0.8W	121	121	110	70	Grey	Daylight	6000K	55lm
NH017W	0.8W	121	121	110	70	Grey	Daylight	6000K	55lm



### WHITE / BLUE RECESSED LED GUIDE LIGHTS

**Construction:** Die-cast Aluminium  
**Driver:** Integral  
**Lamp type:** LED



NH020W



NH020B



NH019W

Code	Wattage	Height	Width	Cut-out	Recessed Depth (mm)	Finish	Colour	CCT	Lumens
NH020B	1W	80	80	75	50	Matt White	Blue	-	-
NH020W	1W	80	80	75	50	Matt White	Daylight	6000K	45lm
NH019W	1W	80	80	75	50	Matt White	Daylight	6000K	45lm



RWL2W

230V 50Hz IP44

### LED WALL / GUIDE LIGHTS

**Construction:** Aluminium  
**Driver:** Integral  
**Lamp type:** LED



Code	Shape	Wattage	Finish	Colour	CCT	Diameter	Projection	Lumens
LWR2G	Round	3W	Grey	Warm White	3500K	115mm	28mm	160lm
LWR2W	Round	3W	White	Warm White	3500K	115mm	28mm	160lm
LWR4G	Round	5W	Grey	Warm White	3500K	220mm	28mm	230lm
LWR4W	Round	5W	White	Warm White	3500K	220mm	28mm	230lm

Code	Shape	Wattage	Finish	Colour	CCT	Height	Width	Projection	Lumens
LWS2G	Square	3W	Grey	Warm White	3500K	105mm	105mm	28mm	160lm
LWS2W	Square	3W	White	Warm White	3500K	105mm	105mm	28mm	160lm
LWS4G	Square	5W	Grey	Warm White	3500K	200mm	200mm	28mm	230lm
LWS4W	Square	5W	White	Warm White	3500K	200mm	200mm	28mm	230lm

230V 50Hz IP54

### LED GUIDE LIGHTS

**Construction:** Aluminium  
**Driver:** Integral  
**Lamp type:** LED



Code	Shape	Wattage	Finish	Colour	CCT	Height	Width	Projection	Lumens
RWL2A	Rectangle	2W	Anthracite	Warm White	3500K	140mm	100mm	32mm	105lm
RWL2W	Rectangle	2W	White	Warm White	3500K	140mm	100mm	32mm	105lm
RWL5A	Rectangle	5W	Anthracite	Warm White	3500K	70mm	200mm	32mm	230lm
RWL5W	Rectangle	5W	White	Warm White	3500K	70mm	200mm	32mm	230lm



BL5BK

230V 50Hz IP65

### CCT ADJUSTABLE SURFACE-MOUNT LED BRICKLIGHTS

- Robust, polycarbonate construction, ideal for Outdoor path / walkway lighting. slim profile, surface mount installation can avoid additional cut out while achieving similar bricklight look and feel.
- Colour temperature adjustable (3000K or 4000K)
- Supplied with 3 x accessories (Grill, Louvre, Shade)
- Kit available to transform fitting to retrofit, recessed bricklight (not included)

**Construction:** Polycarbonate  
**Driver:** Integral  
**Lamp type:** LED



CCT version only



Code	Wattage	Height	Length	Projection (mm)	Finish	Colour	CCT	Lumens
BL5BK	5W	100	235	32	Black	CCT	3000/4000K	495/530lm
BL5G	5W	100	235	32	Grey	CCT	3000/4000K	495/530lm
BL5BLBK	5W	100	235	32	Black	Blue	-	65lm
BL5BLG	5W	100	235	32	Grey	Blue	-	65lm

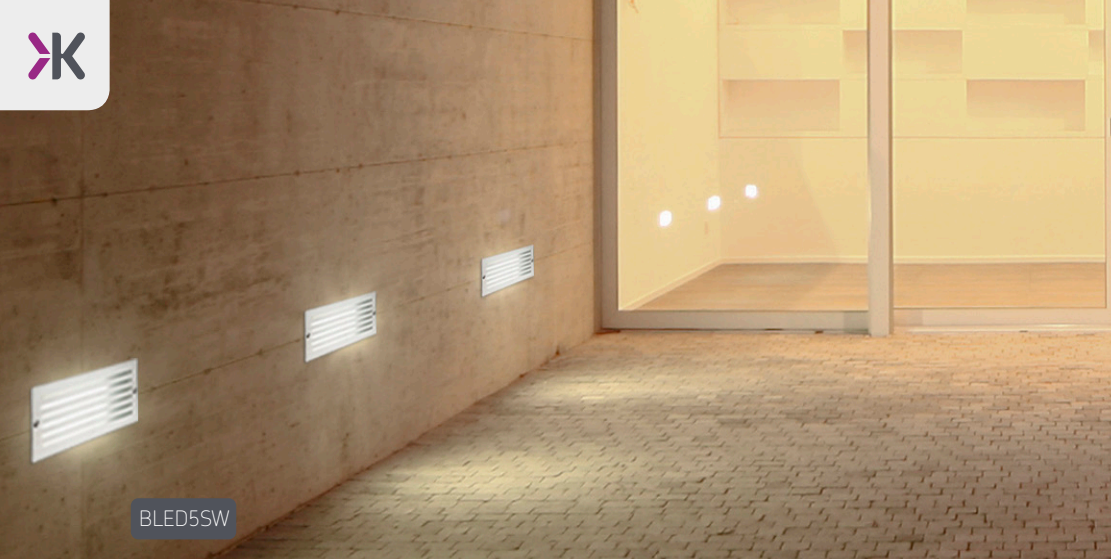
1 YEAR WARRANTY

### RETROFIT KITS

- Back box accessory kit to convert BL5xx fitting to a bricklight, enabling retrofitting or replace existing installations



Code	Model	Height	Length	Projection	Cut-out (mm)
BLKITBK	Retrofit kit - black	100	235	14	L/H/D 197 x 70 x 56
BLKITG	Retrofit kit - grey	100	235	14	L/H/D 197 x 70 x 56



BLED5SW

230V 50Hz IP54 LAMP INCLUDED 3 YEAR WARRANTY

### LED BRICKLIGHT

- Supplied complete with 2 fascia plates - Plain and louvre/grille

**Construction:** Aluminium  
**Driver:** Integral  
**Lamp type:** LED



3500K version only



Code	Wattage	Height	Length	Recessed Depth	Cut-out L/H/D (mm)	Finish	Colour	CCT	Lumens
BLED5BB	5W	101	235	70	226 x 86 x 70	Black	Blue	-	-
BLED5BW	5W	101	235	70	226 x 86 x 70	Black	Warm White	3500K	110lm
BLED5SB	5W	101	235	70	226 x 86 x 70	Brushed Steel	Blue	-	-
BLED5SW	5W	101	235	70	226 x 86 x 70	Brushed Steel	Warm White	3500K	110lm

230V 50Hz IP44 LAMP NOT INCLUDED 1 YEAR WARRANTY

### E27 BRICKLIGHT

- Supplied complete with 2 fascia plates - plain and louvre /grille

**Construction:** Die-cast aluminium  
**Driver:** Not required  
**Lamp type:** E27 (40W max.)



Code	Wattage	Height	Length	Recessed Depth	Cut-out L/H/D (mm)	Finish	Colour
BL01BK	5W	100	235	70	228 x 88 x 90	Black	Warm White



Knightsbridge

SPIKE LIGHTS



SPIKEGUBK

EASPK1BK



### GROUND SPIKE LIGHT

- Supplied with 1.5m cable
- Supplied with wall mount and ground spike

**Construction:** Die-cast Aluminium  
**Driver:** Not Required  
**Lamp type:** GU10 LED



Code	Finish	Overall Ø	Height	Spike Length (mm)
SPIKEGUBK	Black	65	330	173



### GROUND SPIKE LIGHT

- Supplied with 3m cable

**Construction:** 304 Stainless Steel (GU10SPIKE)  
 Die-cast Aluminium (GU10SPIKEBK)  
**Driver:** Not Required  
**Lamp type:** GU10 LED



Code	Finish	Overall Ø	Height	Spike Length (mm)
GU10SPIKE	Stainless Steel	65	250	120
GU10SPIKEBK	Black	65	250	120



### EAMON GU10 SPIKE LIGHT

- Corrosion resistant
- Supplied with 1m outdoor cable

**Construction:** Polycarbonate  
**Lamp type:** GU10 LED

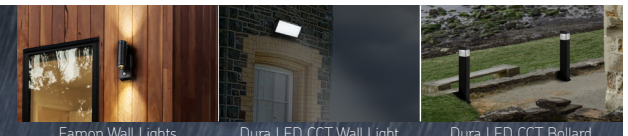


MADE FROM POLYCARBONATE

Code	Finish	Height	Width	Projection	Spike
EASPK1A	Anthracite	110mm	60mm	163mm	162mm
EASPK1BB	Brushed Brass	110mm	60mm	163mm	162mm
EASPK1BK	Black	110mm	60mm	163mm	162mm
EASPK1W	White	110mm	60mm	163mm	162mm

## THE POLYCARBONATE OUTDOOR LIGHTING COLLECTION

ROBUST, CORROSION-RESISTANT, AND LOW-MAINTENANCE



Eamon Wall Lights

Dura LED CCT Wall Light

Dura LED CCT Bollard



GUSPIKES

230V 50Hz IP65 LAMP NOT INCLUDED 2 YEAR WARRANTY

### GU10 SQUARE WALL/SPIKE LIGHT

- Supplied with 2m cable

**Construction:** Die-cast Aluminium  
**Driver:** Not Required  
**Lamp type:** GU10 LED



Code	Finish	Overall Ø	Height
GUSPIKES	Black	72	327



GUSPGR

230V 50Hz IP65 LAMP NOT INCLUDED 1 YEAR WARRANTY

### GROUND SPIKE LIGHT

- Wall-mountable option
- Supplied with 2m cable

**Construction:** Die-cast Aluminium / Spike - Polycarbonate  
**Driver:** Not Required  
**Lamp type:** GU10 LED (10W max.)



Code	Finish	Overall Ø	Height	Spike Length (mm)
GUSPBK	Black	98	326	170
GUSPGR	Grey	98	326	170

230V 50Hz IP65 LAMP NOT INCLUDED 2 YEAR WARRANTY

### GU10 ROUND WALL/SPIKE LIGHT

- Supplied with 2m cable

**Construction:** Die-cast Aluminium  
**Driver:** Not Required  
**Lamp type:** GU10 LED



Code	Finish	Overall Ø	Height
GUSPIKER	Black	72	343

230V 50Hz IP65 LAMP INCLUDED 2 YEAR WARRANTY

### LED SPIKE LIGHT

- Supplied with 2m cable

**Construction:** 304 Stainless Steel  
**Lamp type:** CoB LED



Code	Wattage	Finish	Colour	CCT	Lumens	Overall Ø	Height	Spike Length (mm)
SPIKE55	6W	Stainless Steel	Warm White	3000K	400lm	63	255	110



SPIKE5A

GU10SPIKEL



### LED BLACK SPIKE LIGHT

- Supplied with 2m cable

**Construction:** 304 Stainless Steel Bezel, Die-cast Aluminium Body  
**Lamp type:** CoB LED

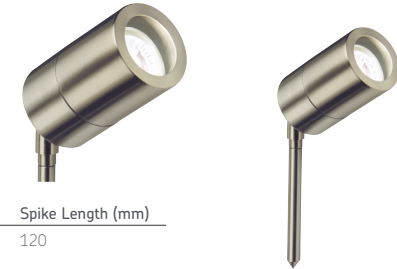


Code	Wattage	Finish	Colour	CCT	Lumens	Overall Ø	Height	Spike Length (mm)
SPIKE5A	6W	Black	Warm White	3000K	380lm	95	340	210

### LIGHT GAUGE SPIKE LIGHT

- Supplied with 2m cable

**Construction:** 304 Stainless Steel  
**Driver:** Not Required  
**Lamp type:** GU10 LED



Code	Finish	Overall Ø	Height	Spike Length (mm)
GU10SPIKEL	Stainless Steel	60	250	120

### EXTENSION SPIKES

**Construction:** Stainless Steel

Code	Finish	Height
EXT2	Stainless Steel	604mm
EXT3	Black	604mm



### LED BLACK SPIKE LIGHT

- Supplied with 3m cable
- Supplied with wall mount and spike

**Construction:** Die-cast Aluminium  
**Lamp type:** CoB LED



Code	Wattage	Finish	Colour	CCT	Lumens	Overall Ø	Height	Spike Length (mm)
SPIKE4BL	4W	Black	Warm White	3000K	355lm	60	305	173



CBL22BK



### PROFESSIONAL STYLE BOLLARDS

- Die-cast aluminium housing with hard wearing powder-coated finish
- 360° all-round light output
- High efficiency SMD LED
- Supplied with anchor bolt mounting kit
- Comes with 1m outdoor cable as standard

**Construction:** Aluminium & stainless steel  
**Driver:** Included  
**Lamp type:** SMD LED  
**Beam angle:** 360°



**Knightsbridge**

BOLLARDS & PEDESTALS

Code	Model	Wattage	Finish	CCT	Colour	Lumens	Height	Diameter
CBL22BK	Bollard	22W	Matt Black	3000K	Warm White	370lm	1000mm	160mm







CBL26BK



### PROFESSIONAL STYLE BOLLARDS

- Die-cast aluminium housing with hard wearing powder-coated finish
- 360° all-round light output
- High efficiency SMD LED
- Supplied with anchor bolt mounting kit
- Comes with 1m outdoor cable as standard

**Construction:** Aluminium & stainless steel  
**Driver:** Included  
**Lamp type:** SMD LED  
**Beam angle:** 360°



Code	Model	Wattage	Finish	CCT	Colour	Lumens	Height	Diameter
CBL26BK	Bollard	26W	Matt Black	3000K	Warm White	650lm	1000mm	200mm



CBL15SS



### LED STAINLESS STEEL PROFESSIONAL BOLLARD

- Stainless steel housing
- Curved inverted funnel reflector with clear lens
- 360° all-round light output
- High efficiency SMD LED
- Supplied with anchor bolt mounting kit
- Comes with 1m outdoor cable as standard

**Construction:** 304 Stainless steel  
**Driver:** Included  
**Lamp type:** SMD LED  
**Beam angle:** 360°



Code	Model	Wattage	Finish	CCT	Colour	Lumens	Height	Diameter
CBL15SS	Bollard	15W	Stainless Steel	3000K	Warm White	810lm	950mm	160mm





BLP10CCT

OL01B



### LED POLYCARBONATE BOLLARD

- Weather-resistant
- CCT adjustable (3000K/ 4000K/ 5700K)
- Supplied with mounting kit

**Construction:** Polycarbonate  
**Driver:** Included  
**Lamp type:** SMD LED  
**Beam angle:** 360°



MADE FROM POLYCARBONATE



Code	Model	Finish	CCT	Colour	Lumens	Height	Width	Projection
BLP10CCT	Bollard	Black	3000/4000/5700K	CCT	655/750/700lm	782mm	174mm	174mm

### E27 OUTDOOR PEDESTAL AND BOLLARD

- Opal polycarbonate 360° diffuser

**Construction:** Die-cast Aluminium  
**Driver:** Not Required  
**Lamp type:** E27 (20W max.)

Code	Model	Finish	Height	Width	Depth
OL01P	Pedestal	Black	265mm	108mm	108mm
OL01B	Bollard	Black	650mm	108mm	108mm



OL01P

OL01B



### E27 OUTDOOR PEDESTAL

**Construction:** Aluminium & glass  
**Driver:** Not Required  
**Lamp type:** E27 GLS (15W max.)

Code	Model	Finish	Height	Diameter
OLG1P	Pedestal	Black	500mm	150mm

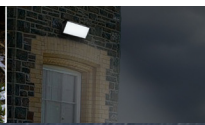


## THE POLYCARBONATE OUTDOOR LIGHTING COLLECTION

ROBUST, CORROSION-RESISTANT, AND LOW-MAINTENANCE



Eamon Spike Lights



Dura LED CCT Wall Light



Dura LED CCT Bollard

FOR MATCHING WALL LIGHTS, SEE PAGE 15





GDL2

230V  
50Hz

IP54



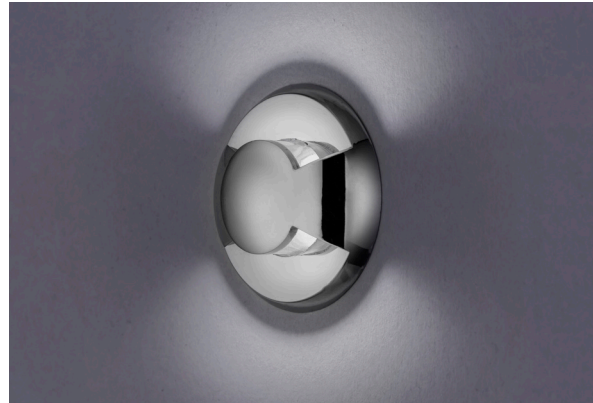
LAMP NOT  
INCLUDED

2  
YEAR  
WARRANTY



### GU10 BOLLARDS

**Construction:** 304 Stainless Steel  
**Lamp type:** GU10 LED



Code	Model	Finish	Dimensions (mm)
GDL2	GU10 Bollard	Anthracite	H: 650 Ø: 102
GDL3	GU10 Bollard	Anthracite	H: 1100 Ø: 102
GDLMK23	Mounting Kit for GDL2 and GDL3		H: 155 Ø: 135
GDLSPIKE2	Ground Spike for GDL2		H: 400 Ø: 87

FOR MATCHING WALL LIGHTS, SEE PAGE 15



**Knightsbridge**

GROUND LIGHTS



316WALK



### GU10 GROUND LIGHT

**Construction:** 304 Stainless Steel  
**Driver:** Not Required  
**Lamp type:** GU10 LED

Code	Model	Bezel	Cut-out Ø	Recessed Depth (mm)
WGULEN	Round	105	92	158



### GU10 GROUND LIGHT

**Construction:** 304 Stainless Steel  
**Driver:** Not Required  
**Lamp type:** GU10 LED



WGULED      WSGULED      WHGULED

Code	Model	Bezel	Cut-out	Recessed Depth (mm)
WGULED	Round	105mm	92	132
WSGULED	Square	100mm x 100mm	92	132
WHGULED	Hexagon	115mm x 100mm	92	132

### 316 STAINLESS STEEL GU10 GROUND LIGHT

**Construction:** 316 Stainless Steel  
**Driver:** Not Required  
**Lamp type:** GU10 LED

Code	Model	Bezel	Cut-out Ø	Sleeve Ø	Recessed Depth (mm)
316WALK	316 Stainless Steel	101	80	95	190



LEDGL3W



### LED GROUND LIGHTS

- Ideal for driveways and decking, safe for indoor and outdoor use
- Supplied with 2m outdoor flexible cable

**Construction:** 304 Stainless Steel  
**Driver:** Integral  
**Lamp type:** LED



Code	Wattage	Bezel	Cut-out Ø	Recessed Depth (mm)	Model	Colour	CCT	Lumens
LEDGL3W	3W	92	78	94	Stainless Steel	Warm White	3000K	270lm
LEDGL3D	3W	92	78	94	Stainless Steel	Daylight	6000K	290lm



### GROUND LIGHT WITH HALF LIP

**Construction:** 304 Stainless Steel  
**Driver:** Not Required  
**Lamp type:** GU10 LED



Code	Model	Bezel	Cut-out Ø	Sleeve Ø	Recessed Depth	Overall Height (mm)
CAPWGU	Stainless Steel	88	65	70	109	138



LEDM08W1



### COB LED GROUND LIGHTS

- Pre-wired with 2m cable

**Construction:** 304 Stainless Steel

**Driver:** Integral

**Lamp type:** CoB LED



Code	Wattage	Finish	Colour	CCT	Bezel Ø	Sleeve Ø	Recessed Depth	Lumens
LDGL5	5W	Stainless Steel	Warm White	3000K	68mm	60mm	80mm	240lm
LDGL6	6W	Stainless Steel	Warm White	3000K	129mm	114mm	70mm	405lm
LDGL9	9W	Stainless Steel	Warm White	3000K	160mm	144mm	88mm	610lm

### LED GROUND LIGHTS

- Pre-wired with 1.5m cable

**Construction:** Stainless Steel & Aluminium

**Driver:** integral

**Lamp type:** LED



Cool white only



Code	Wattage	Bezel Ø	Cut-out Ø	Sleeve Ø	Recessed Depth (mm)	Finish	Colour	CCT	Lumens
LEDM07B	1.5W	62	50	60	82.5	Stainless Steel	Blue	-	-
LEDM07W	1.5W	62	50	60	82.5	Stainless Steel	Cool White	4000K	70lm

### LED SHALLOW GROUND LIGHTS

- Pre-wired with 2.5m cable
- Supplied with polycarbonate housing
- This fitting is extremely shallow making it very versatile

**Construction:** Stainless Steel & Aluminium

**Driver:** Integral

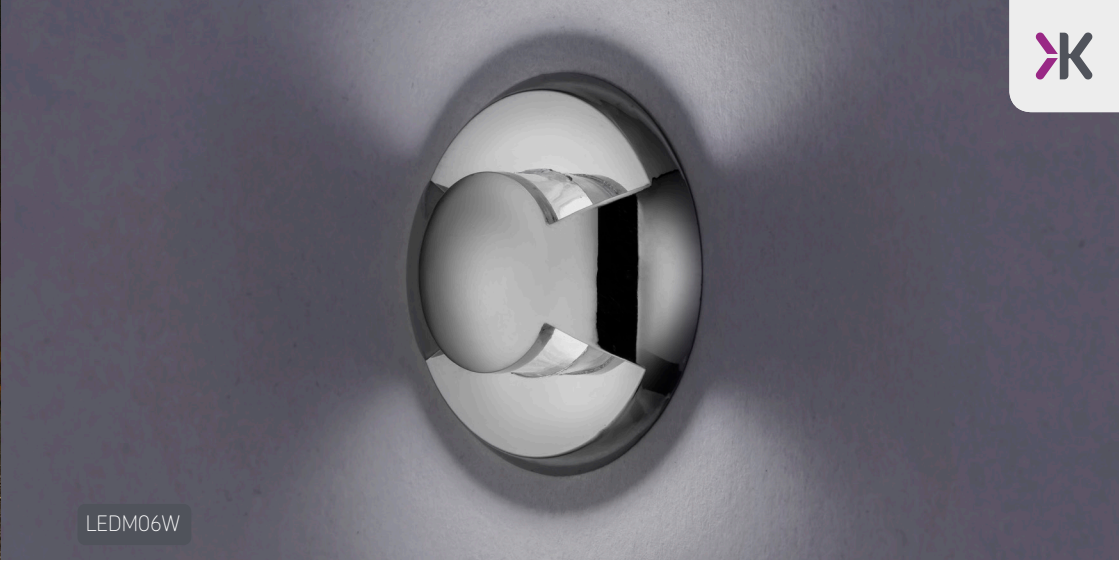
**Lamp type:** LED



Cool white only



Code	Wattage	Bezel Ø	Cut-out Ø	Sleeve Ø	Recessed Depth (mm)	Finish	Colour	CCT	Lumens
LEDM08B1	1.7W	110	90	97	52	Stainless Steel	Blue	-	-
LEDM08W1	1.7W	110	90	97	52	Stainless Steel	Cool White	4000K	90lm



LEDM06W



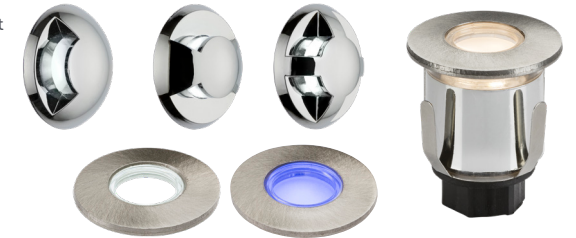
### LED WALL MARKER / GROUND LIGHTS WITH INTERCHANGEABLE FASCIAS

- Supplied with 3 interchangeable chrome effect polycarbonate heads for directional light output
- Suitable for ground and wall installation
- Pre-wired with 2m cable

**Construction:** Stainless Steel & Polycarbonate

**Driver:** Integral

**Lamp type:** LED



Code	Wattage	Bezel Ø	Cut-out Ø	Recessed Depth (mm)	Finish	Colour	CCT	Lumens
LEDM06B	0.6W	38	32	48	Brushed Nickel	Blue	-	-
LEDM06W	0.6W	38	32	48	Brushed Nickel	Daylight	6000K	50lm
LEDM06WW	0.6W	38	32	48	Brushed Steel	Warm White	3000K	25lm

### LED DECKING KIT

- 10 x 0.2W LED
- Stainless steel bezels supplied as standard

**Construction:** Polycarbonate

**Driver:** Included

**Lamp type:** LED



Code	Wattage	Bezel Ø	Cut-out Ø	Recessed Depth (mm)	Finish	Colour	CCT	Lumens
KIT16WW	2.2W	30	25	27	Stainless Steel	Warm White	3000K	105lm
KIT16W	2.2W	30	25	27	Stainless Steel	Daylight	6000K	90lm
KIT16B	2.2W	30	25	27	Stainless Steel	Blue	-	-



HPLED1W



### LED DECKING LIGHTS (1W)

- Weight load: 500kg

**Construction:** 304 Stainless Steel  
**Driver:** Integral  
**Lamp type:** LED



Code	Wattage	Bezel Ø	Cut-out Ø	Sleeve Ø	Recessed Depth (mm)	Finish	Colour
HPLED1W	1W	62	40	60	90	Stainless Steel	Daylight



### CONSTANT CURRENT LED DECKING LIGHTS

- 350mA constant current driver required

**Construction:** 304 Stainless Steel  
**Driver:** Required  
**Lamp type:** LED



Code	Wattage	Bezel Ø	Cut-out Ø	Recessed Depth (mm)	Finish	Colour
1IPB	1W	60	50	40	Stainless Steel	Blue
1IPW	1W	60	50	40	Stainless Steel	Daylight



4IPW



### LED DECKING LIGHTS (0.5W)

- 24V constant voltage

**Construction:** 304 Stainless Steel  
**Driver:** Required  
**Lamp type:** LED



Code	Wattage	Bezel Ø	Cut-out Ø	Recessed Depth (mm)	Finish	Colour
4IPB	0.5W	36	28	59	Stainless Steel	Blue
4IPW	0.5W	36	28	59	Stainless Steel	Cool White



230V 50Hz
IP65
☒
LAMP INCLUDED
3 YEAR WARRANTY
☒

### LIGHTWEIGHT LED FLOODLIGHTS

- This range of LED floodlights offers the user quality and versatility, with the ability to add either PIR or microwave sensors
- High lumen - produces in excess of 120lm/W
- Easy-install - with angled brackets and built-in connector, meaning no outdoor connections and faster installations
- Low profile design

**Construction:** Die-cast aluminium  
**Driver:** Integral  
**Lamp type:** LED



Code	Wattage	Colour	CCT	Height	Width	Projection	Lumens
FLN10	10W	Cool White	4000K	104mm	95mm	28mm	1085lm
FLN20	20W	Cool White	4000K	129mm	135mm	28mm	2240lm
FLN30	30W	Cool White	4000K	142mm	160mm	28mm	3330lm
FLN50	50W	Cool White	4000K	177mm	200mm	28mm	5430lm

### FLN FLOODLIGHT ACCESSORIES

Code	Model
FLNPIR	PIR Accessory
FLNMIC	Microwave Accessory



## Knightsbridge FLOODLIGHTS



FLHLPC100



### HIGH LUMEN COMMERCIAL FLOODLIGHT 4000K

- Up to 150lm/W
- IP66 & IK08
- 5-year warranty
- Optional Symmetric/Asymmetric lenses available (sold separately)

**Construction:** Die-cast aluminium

**Driver:** Integral

**Lamp type:** SMD LED

**Beam angle:** 115°



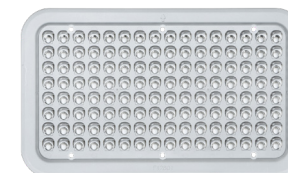
Code	Wattage	Model	CCT	Lumens	Height	Width	Depth
FLHL100	100W	Black	4000K	15,390lm	241mm	270mm	60mm
FLHL200	200W	Black	400K	30,950lm	305mm	341mm	71mm



### ASYMMETRIC & SYMMETRIC LENS ACCESSORIES

- Simple installation
- Ideal for car park and sports field floodlighting
- Reduces light pollution

**Construction:** Polycarbonate



Code	Model	Height	Width
FLHLAS100	FL High Lumen 100W 55x125° Asymmetric Lens Accessory	121mm	204mm
FLHLSM100	FL High Lumen 100W 60° Symmetric Lens Accessory	121mm	204mm
FLHLAS200	FL High Lumen 200W 55x125° Asymmetric Lens Accessory	182mm	274mm
FLHLSM200	FL High Lumen 200W 60° Symmetric Lens Accessory	182mm	274mm

### POLE CLAMP ACCESSORY

- Suitable for the FLHL floodlights
  - One bracket can be used to mount 2 floodlights\*
  - Ideal for retrofit installation\*
- \* Check pole suitability

**Construction:** Steel

Code	Width	Depth
FLHLPC100	200mm	50
FLHLPC200	260mm	50



Pole not included

### 76MM POLE MOUNT ACCESSORY

- Suitable for the FLHL100 & FLHL200 floodlights
  - Ideal for retrofit installation\*
- \* Check pole suitability

**Construction:** Steel

Code	Width	Diameter
FLHLPM	266mm	89mm



Pole not included





FLP100

FL16ABK



### HIGH POWER LED FLOODLIGHTS

LED Floodlights with high lumen output and instant ignition makes this luminaire ideal for security / high level illumination in commercial, retail, and industrial environments

- Internal terminal block on the rear allows for direct wiring
- Low maintenance and energy efficient with high output
- Fortified bracket and fastenings

**Construction:** Die-cast Aluminium  
**Driver:** Integral  
**Lamp type:** LED



Code	Wattage	Colour	CCT	Height	Width	Depth	Lumens
FLP100	100W	Cool White	4000K	205mm	300mm	60mm	8400lm
FLP100A	100W	Daylight	6000K	205mm	300mm	60mm	9200lm
FLPA150	150W	Cool White	4000K	237mm	360mm	73mm	13500lm
FLPA150D	150W	Daylight	6000K	237mm	360mm	73mm	14100lm
FLPA200	200W	Cool White	4000K	237mm	360mm	73mm	19655lm
FLP200A	200W	Daylight	6000K	237mm	360mm	73mm	18400lm



Internal terminal block for direct wiring

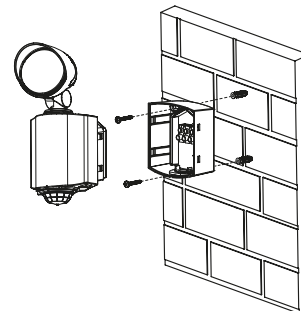
### LED SECURITY SPOTLIGHTS WITH PIR

- Adjustable die-cast aluminium head and polycarbonate body
- Cree LED
- Instant ignition
- Easy-fix mounting for simple installation
- Integral 180° PIR sensor with adjustable lux and time settings - 10m detection range (approx.)

**Construction:** Die-cast Aluminium & Polycarbonate  
**Driver:** Integral  
**Lamp type:** LED  
**PIR field of detection:** 180°



Code	Wattage	Finish	CCT	Height	Width	Projection	Lumens
FL8ABK	8W	Black	5000K	176mm	78mm	107mm	610lm
FL8AW	8W	White	5000K	176mm	78mm	107mm	610lm
FL16ABK	2 x 8W	Black	5000K	176mm	141mm	113mm	1300lm
FL16AW	2 x 8W	White	5000K	176mm	141mm	113mm	1300lm





SL30CCTB



### CCT SECURITY FLOODLIGHT WITH PIR SENSOR

- Wide operating voltage range 100-277Vac
- Twin or triple head options available (20W & 30W)
- High quality SMD2835 LEDs
- Manual override facility
- Adjustable sensitivity, time, and lux
- Easy fix wall mount and push fit assembly
- 90° PIR detection range
- 8m detection distance

**Construction:** Polycarbonate  
**Driver:** Integral  
**Lamp type:** LED  
**Beam angle:** 70° (from each head)



Code	Wattage	Model	CCT	Projection	Width	Base	Lumens
SL20CCTB	20W	Black	CCT Adjustable	173mm	243mm	107mm	1810lm
SL20CCTW	20W	White	CCT Adjustable	173mm	243mm	107mm	2035lm
SL30CCTB	20W	Black	CCT Adjustable	190mm	222mm	107mm	2675lm
SL30CCTW	20W	White	CCT Adjustable	190mm	222mm	107mm	2960lm



Featuring user definable white light CCT Adjustable 3000/4000/5500K by means of a selection switch



360° lamp bracket rotation, 180° lamp head rotation, 270° lamp head tilt



PIR motion sensor with adjustable timer and adjustable Lux levels . override facility



FLTPB



### TWIN SPOT SECURITY FLOODLIGHTS

- 2 x 9W LED
- Individual adjustable heads
- Long life and low-maintenance
- Ideal for outdoor and indoor applications; domestic, retail, and commercial use

**PIR version:**

- Illuminates for a fixed period of 90 seconds - illumination is constant whilst movement is detected
- Manual override facility
- Maximum detection distance approx. 8 metres

**Construction:** Die-cast Aluminium  
**Driver:** Integral  
**Lamp type:** CoB LED  
**PIR field of detection:** 120°



Code	Wattage	Model	CCT	Height	Width	Projection	Lumens
FLTB	2 x 9W	Black	3500K	104mm	205mm	150mm	1455lm
FLTW	2 x 9W	White	3500K	104mm	205mm	150mm	1455lm
FLTPB	2 x 9W	Black with PIR	3500K	120mm	205mm	150mm	1455lm
FLTPW	2 x 9W	White with PIR	3500K	120mm	205mm	150mm	1455lm



**Knightsbridge**

SENSORS



OS001B

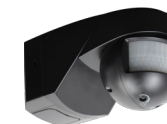
- 230V  
50Hz
- IP55
- 2  
YEAR  
WARRANTY
- MANUAL  
OVERRIDE
- CORNER  
MOUNTABLE

#### OUTDOOR PIR SENSORS

- Completely adjustable head unit for optimum positioning
- Easy to install – wire to the rear mounting plate then simply click the PIR unit into the mounting plate
- Versatile mounting options including wall, ceiling, or corner mounting
- Includes shrouding kit for sheilding parts of the PIR to prevent accidental activation
- Automatic operation or manual override function



OS001



OS001B

**Field of detection: 200°**

Code	Range*	Function	Max. Load	Colour
OS001	12m	Override function / Adjustable Lux Adjustable Time (3 sec - 30mins)	2000W Incandescent / 225W LED	White
OS001B	12m	Override function / Adjustable Lux Adjustable Time (3 sec - 30mins)	2000W Incandescent / 225W LED	Black

- 230V  
50Hz
- IP44
- 2  
YEAR  
WARRANTY

#### OUTDOOR PIR SENSORS

- Adjustable head unit (up /down)
- Wall or ceiling mountable

**Field of detection: 180°**



OS004



OS004B

Code	Range*	Function	Max. Load	Colour
OS004	12m	Adjustable Lux / Adjustable Time (10s - 8mins)	1200W Incandescent / 300W LED	White
OS004B	12m	Adjustable Lux / Adjustable Time (10s - 8mins)	1200W Incandescent / 300W LED	Black

\* When mounted at 2.4 metres high



OS006

230V  
50Hz

IP44

2  
YEAR  
WARRANTY

### OUTDOOR PIR SENSORS (COMPACT)

- Adjustable head unit
- Wall or ceiling mountable
- Field of detection: 180°
- \* When mounted at 2.4 metres high



OS0014

OS0014B

Code	Range*	Function	Max. Load	Colour
OS0014	12m	Adjustable Lux / Adjustable Time (10 sec - 15mins)	2000W Incandescent 1000W LED	White
OS0014B	12m	Adjustable Lux / Adjustable Time (10 sec- 15mins)	2000W Incandescent 1000W LED	Black

230V  
50Hz

IP55

2  
YEAR  
WARRANTY

### OUTDOOR PHOTOCELL SENSOR

- Dusk-to-dawn photocell timer. Ideal for controlling outdoor lighting during the evenings for security and convenience
- Suitable for shop window display lighting or advertising systems
- Wall mountable - easy installation



OS006

OS006B

Code	Function	Max. Load	Colour
OS006	Ambient Light Memory Function - 2/4/6/8hr durations	1000W Incandescent / 200W LED	White
OS006B	Ambient Light Memory Function - 2/4/6/8hr durations	1000W Incandescent / 200W LED	Black

230V  
50Hz

2  
YEAR  
WARRANTY

### PHOTOCELL SENSORS



OSPCR

OSPCKIT

Code	Function	IP Rating	Max. Load	Colour
OSPCR	Photocell Switch	IP65	Max. load: 500W Incandescent/850VA inductive/300W LED	Black
OSPCKIT	Photocell Control Sensor	IP66	10A / Incandescent 1000W / LED 300W	Black



**Knightsbridge**

OUTDOOR  
LED FLEX



LFC24IPWW



To indicate preferred length, please add -1M, -3M or -5M

### 24V IP67 SINGLE COLOUR LED FLEX

- Silicone encapsulated IP67 LED Flex, ideal for exterior use
- Dimmable when using LEDFRA7 remote control unit, or when using constant voltage dimmable drivers (not included)

Driver: Required

Compatible remote: LEDFRA7



Code	Watts/mtr	LEDs/mtr	Colour	CCT	Width	Length	Lumens/mtr
LFC24IPWW	4.8W	64	Warm White	3000K	10mm	30000mm	560lm
LFC24IPCW	4.8W	64	Cool White	4000K	10mm	30000mm	610lm
LFC24IPDL	4.8W	64	Daylight	6000K	10mm	30000mm	590lm

### 24V IP67 COLOUR-CHANGING LED FLEX

- Silicone encapsulated IP67 LED Flex, ideal for exterior use
- Fully controllable with a selection of remote control units (not included)

Driver: Required

Compatible remotes: LFC24IPCCT



Code	Watts/mtr	LEDs/mtr	Colour	Width	Length
LFC24IPRGB	9W	36	RGB	12.2mm	30000mm

### 24V IP67 CCT ADJUSTABLE LED FLEX

- Silicone encapsulated IP67 LED Flex, ideal for exterior use
- Colour temperature adjustable, Warm White 2700K to Daylight 6000K

Driver: Required

Compatible remotes: LEDFR8



Code	Watts/mtr	LEDs/mtr	Colour	Width	Length
LFC24IPCCT	11W	120	CCT 2700 - 6000K	12mm	30000mm

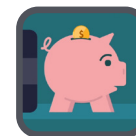


### SMART LED FLEX CONTROLLER

- Compatible with single colour, CCT, RGB, and RGBW Flex
- Enables users to adjust the colour temperature of their LED Flex via the SmartKnight app
- RGB and RGBW LED Flex only: enables users to adjust the RGB colour, with over 16 million colour options, via the SmartKnight app



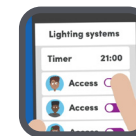
Code	Model
LEDFWIFI	12V / 24V



#### NO HUB REQUIRED

Products connect directly via Wi-Fi enabling global remote access.

No space and money wasted on additional hubs / gateway devices



#### TIMERS

Set up schedules within the home, using the timer function to automate when devices turn on/off.



#### VOICE CONTROL

Voice control works with Hey Google or Amazon Alexa



#### GEOFENCING

Never come home to darkness; set up lights to automatically turn on/off based on your GPS location



#### SCENES

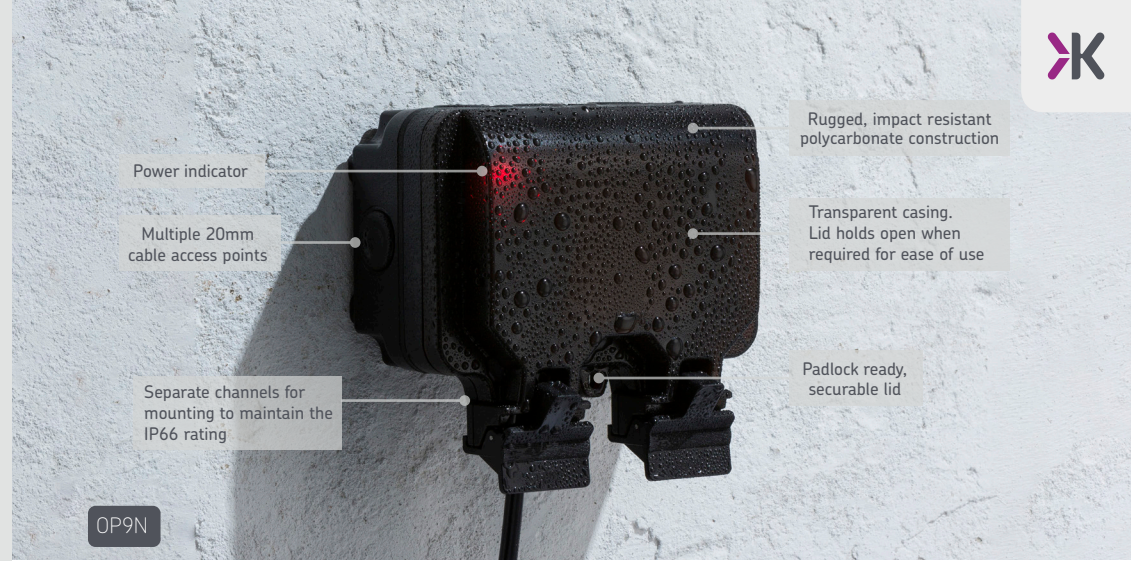
Utilise preset scenes such as 'Movie', or create your own.

To explore our full range of LED Flex accessories, including connectors and drivers, please visit [mlaccessories.co.uk](http://mlaccessories.co.uk)



Amazon, Alexa and all related logos are trademarks of Amazon.com, Inc. or its affiliates.

Google is a trademark of Google LLC.



IP66 IK06 2 YEAR WARRANTY

### 13A OUTDOOR SWITCHED SOCKETS

Code	Size	Model
OP7N	1G	DP + Indicator (Twin Earth)
OP9N	2G	DP + Indicator (Twin Earth)
OP9RCD	2G	DP + RCD (Type-A)



### IP66 2G SMART OUTDOOR SWITCHED SOCKET

- Controls up to 2 outdoor appliances
- Manually override by using the switch on the socket
- Rugged outdoor enclosure
- Range: 20m-40m (depending on Wi-Fi signal coverage)

Code	Model
OP9KW	Smart Outdoor Socket



### 13A 2G REMOTE CONTROLLED OUTDOOR SOCKET

Remote control outdoor socket solution, enabling you to control your socket from a convenient key fob style remote control

- Control either socket from your key remote fob
- Ideal for controlling outdoor devices like water features or pond lighting
- Remote fob remote requires 2 x 3V CR2016 Lithium batteries (included)
- Range of up to 30m

Code	Model
OP9R	IP66 2G Remote Controlled Switched Socket
OPKEYFOB	Spare Remote



**Knightsbridge**

WEATHERPROOF  
WIRING  
ACCESSORIES



Rugged, impact-resistant polycarbonate construction

Multiple 20mm cable access points

Separate channels for mounting to maintain the IP66 rating

Built-in blue LED indicator

20AX switches

Unique circular rocker switch design

OP3

OP3GBK

IP66

IK06

2  
YEAR  
WARRANTY

## 20AX OUTDOOR SWITCHES

- Manufactured from robust, high impact grade polycarbonate for a long life
- Black finish with unique circular rocker switch
- IP66 / IK06 rated
- 20AX 2-way switch function
- Multiple 20mm cable entries/exits allow for optimum positioning
- Certified to BS EN 60669-1

Code	Model
OP2	1G 2-Way with Indicator
OP3	2G 2-Way with Indicator
OP21	1G Retractive with Indicator



## FUSED SPUR UNITS

- Manufactured from robust, high impact grade polycarbonate for a long life
- Black finish with a smoked black front casing for indicator visibility
- IP66 / IK06 rated
- Transparent user-friendly lid with large catch feature makes it simple and easy to open and close, Lid can hold open when required for ease of use
- Wider cable channels and casing will accommodate most plugs with thick over-moulded strain reliefs typically associated with outdoor products
- Multiple 20mm cable entries/exits allow for optimum positioning
- Certified to BS 1363-4

Code	Model
OP63N	Switched + Indicator
OP6N	Unswitched + Indicator



IP66

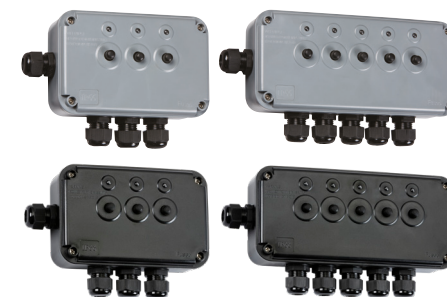
IK06

2  
YEAR  
WARRANTY

## OUTDOOR CONTROL BOXES

- Manual and RF remote control boxes
- Rugged and impact resistant polycarbonate construction
- Multiple 20mm cable access points
- Range of up to 20m on wireless models (dependent on environment)

Code	Load	Model	Finish
IP3G	13A	3G	Grey
OP3GBK	13A	3G	Black
IP5G	13A	5G	Grey
OP5GBK	13A	5G	Black



## RF REMOTE CONTROLLED

Code	Load	Model	Finish
IP663G	13A	3G Control Box + Remote	Grey
OP663GBK	13A	3G Control Box + Remote	Black
IP665G	13A	5G Control Box + Remote	Grey
OP665GBK	13A	5G Control Box + Remote	Black
IPREMOTE	13A	Spare Remote Control	Grey
OPREMOTE	13A	Spare Remote Control	Black



## RCD PROTECTED OUTDOOR SOCKET KIT

- 2G Outdoor socket
- RCD Plug
- 3m Rubber outdoor cable

Code	Size	Model
OPRCDKIT	2G	Outdoor Socket Kit + RCD Plug



Kit supplied unassembled



JB55BK

JB003

**IP55** **IK06** **2**  
YEAR WARRANTY

### WEATHERPROOF BOXES

Ideal for creating bespoke outdoor wiring requirements, outdoor seasonal lighting, and general outdoor power requirements

- 5 channel gasket allows 1 x power in and 4 x power out, ideal for use with a 4G trailing socket
- Wall mountable via rear mounting plate
- Velcro mounting pad included with Velcro tape
- Screwless design, easy to open and close



Code	Height	Width	Projection	Model
JB55	334mm	220mm	116mm	Grey
JB55BK	334mm	220mm	116mm	Black

### OUTDOOR ENCLOSURES

- Rugged, impact resistant polycarbonate construction
- Multiple 20mm cable access points
- Designed for use up to 230V 50Hz



Code	Height	Width	Projection	Model
JB007	86mm	74mm	62mm	Grey
JB008	86mm	125mm	62mm	Grey
JB009	111mm	181mm	100mm	Grey
JB0010	184mm	274mm	135mm	Grey

Code	Height	Width	Projection	Model
JB007BK	86mm	74mm	62mm	Black
JB008BK	86mm	125mm	62mm	Black
JB009BK	111mm	181mm	100mm	Black
JB0010BK	184mm	274mm	135mm	Black

**IP68** **2**  
YEAR WARRANTY

### WEATHERPROOF CONNECTORS

- IP68 rated
- 450V 16A
- 3 pole
- For use with H07RNF 3G 0.75mm<sup>2</sup> to 4.0mm<sup>2</sup> cable



Code	Depth	Cable Diameter	Model
JB002	5bar	Min. 5mm / Max. 14mm	Inline Connector
JB003	2bar	Min. 5mm / Max. 14mm	3-Way Connector
JB004	2bar	Min. 5mm / Max. 10mm	3-Way Connector box
JB0011	2bar	Min. 5mm / Max. 12mm	Plug & Socket Connector

**IP66** **2**  
YEAR WARRANTY

### IP66 CABLE GLAND

For use with outdoor switches, sockets, and enclosures

Code	Size	Qty
JB006	M20 (20mm)	10









 01582 88 77 60

 [mlaccessories.co.uk](http://mlaccessories.co.uk)

 [sales@mlaccessories.co.uk](mailto:sales@mlaccessories.co.uk)